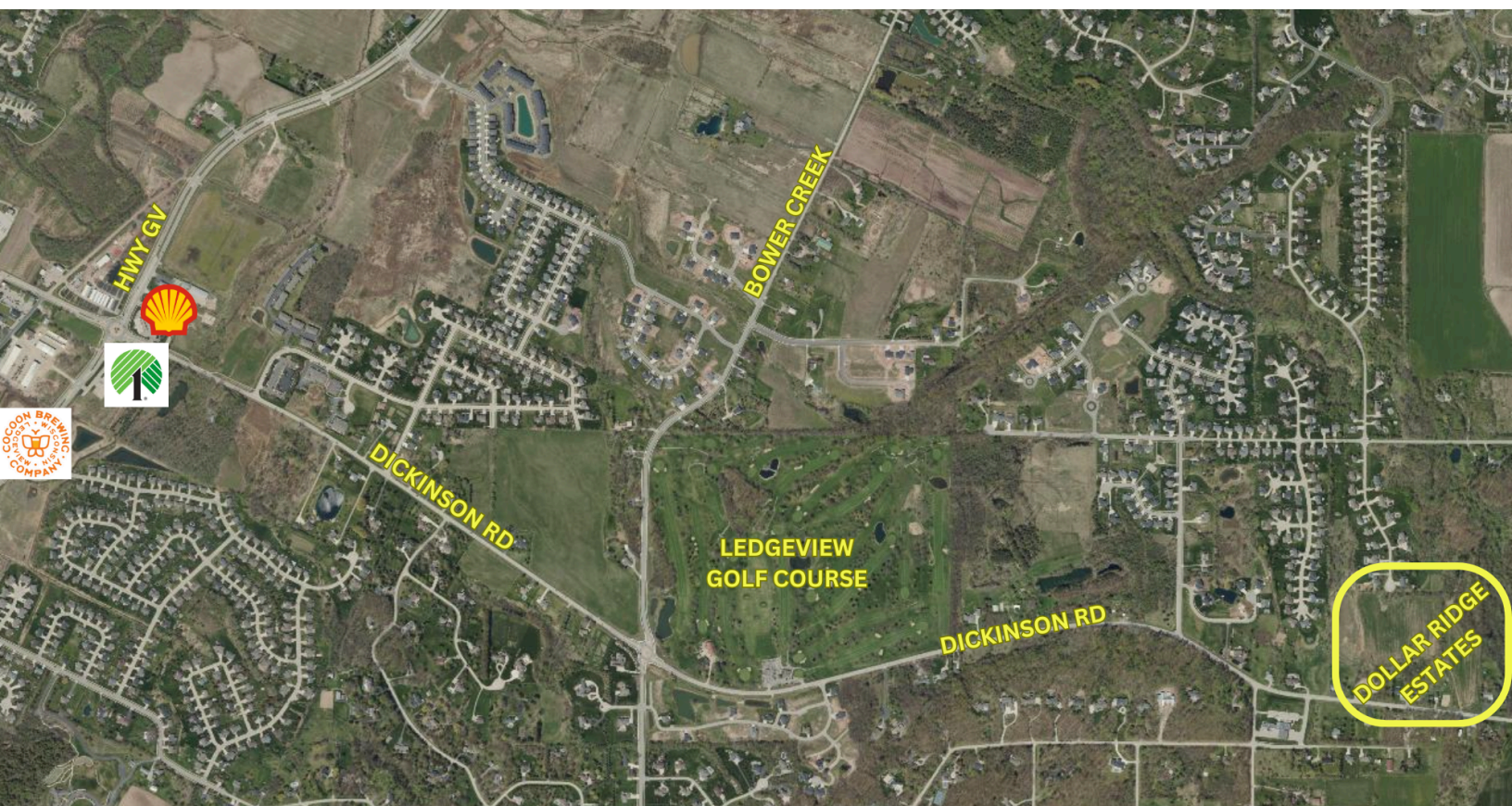




# DOLLAR RIDGE ESTATES

## TOWN OF LEDGEVIEW

Dollar Ridge Estates is the newest subdivision located in the Town of Ledgeview and offers breathtaking views of the Green Bay metro skyline. Most lots offer a private backyard and/or a wooded ravine. This community is less than a mile away from the Ledgeview Golf Course and offers convenient & quick access to Hwy 172 and Interstates 41 & 43. You will also be within minutes of shopping and dining along Hwy GV. You will be in the highly sought after East De Pere School District. Comprehensive covenants will preserve its aesthetic beauty and your investment. The Town of Ledgeview will safeguard and maintain designated areas of the land's natural and environmentally sensitive areas for all to enjoy.



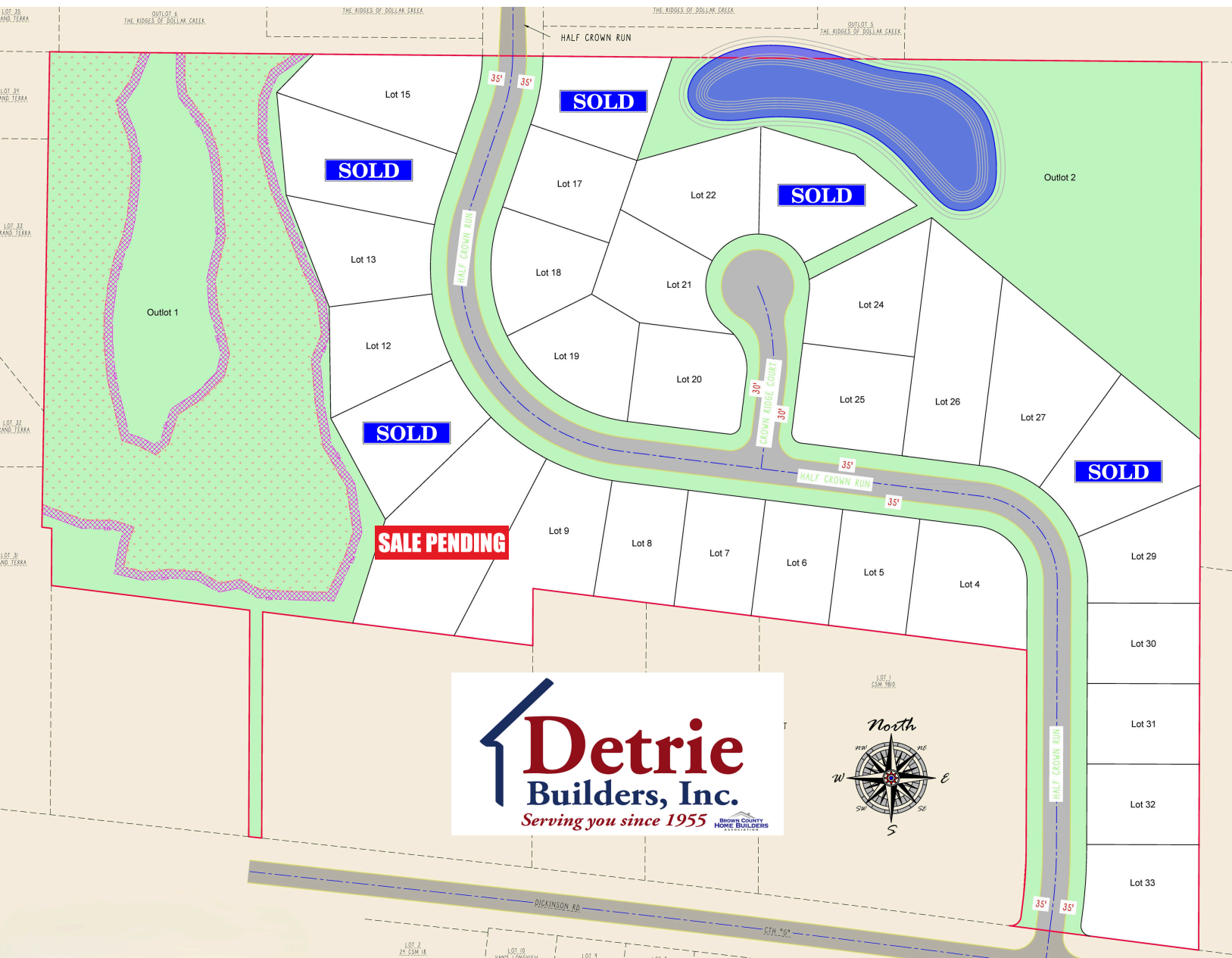
701 PINE ST. GREEN BAY, WI 54301  
PHONE: (920) 437-0681  
WWW.DETRIEINC.COM





# DOLLAR RIDGE ESTATES

## TOWN OF LEDGEVIEW



701 PINE ST. GREEN BAY, WI 54301  
PHONE: (920) 437-0681  
WWW.DETRIEINC.COM

Updated: 9.18.2025





# DOLLAR RIDGE ESTATES

## TOWN OF LEDGEVIEW

PRICE LIST					
LOT #	PRICE	LOT #	PRICE	LOT #	PRICE
1	BY OTHERS	12	\$134,900	23	<b>SOLD</b>
2	BY OTHERS	13	\$134,900	24	\$144,900
3	BY OTHERS	14	<b>SOLD</b>	25	\$104,900
4	\$134,900	15	\$144,900	26	\$189,900
5	\$129,900	16	<b>SOLD</b>	27	\$189,900
6	\$129,900	17	\$129,900	28	<b>SOLD</b>
7	\$134,900	18	\$119,900	29	\$174,900
8	\$134,900	19	\$119,900	30	\$129,900
9	\$139,900	20	\$99,900	31	\$129,900
10	<b>SALE PENDING</b>	21	\$129,900	32	\$129,900
11	<b>SOLD</b>	22	\$149,900	33	\$119,900



701 PINE ST. GREEN BAY, WI 54301

PHONE: (920) 437-0681

WWW.DETRIEINC.COM

